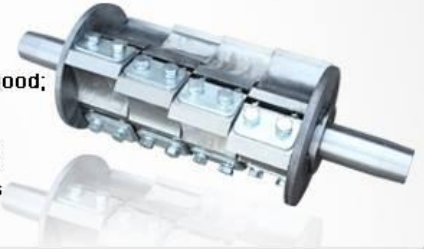
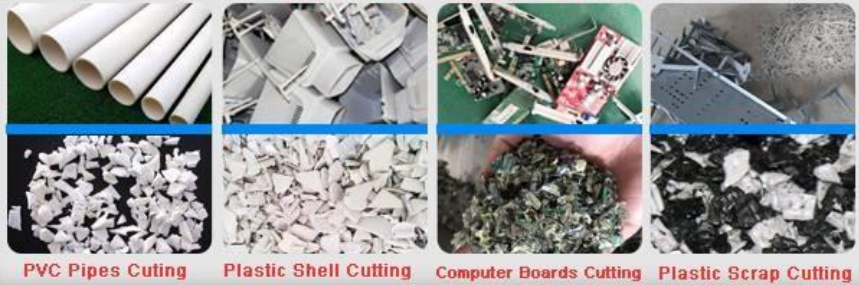


## GP Series - Flake Type Blade Plastic Crusher

1. The cutter saddle structure between claw And flat blades;
2. Cast hopper double glazed, mute effect is good;
3. The blade material is 9CrSi alloy steel;
4. Using well-known brand appliances, motors;
5. Apply to ordinary sheet profiles and various Plastic nozzle material.



### Before And After Crushing Effect



### XC-GP FLAKE TYPE CRUSHER

#### FEATURE:

- 1, the structure of the tool rest between claw blade knife peace;
- 2, hopper double insulation, mute effect is good.
- 3, the blade with 9 crsi alloy tool steel;
- 4, adopt famous brand electrical appliances, motor;
- 5, suitable for ordinary piece of material and all kinds of plastic material flooring.

#### SPECIFICATIONS

MODEL	XC-GP230	XC-GP300	XC-GP400	XC-GP500	XC-GP600	XC-GP800
Crushing diameter (mm)	230*200	310*200	410*240	510*300	610*330	815*470
Crushing capacity (KG/H)	100-150	150-200	200-250	300-350	350-450	450-600
The fixed knife	2	2	2	2	4	4
Rotating knife	6	9	12	15	18	24
KW power	4	5.5	7.5	11	15	22/30
HP	5	7.5	10	15	20	30/40
Dimension (L * W * Hcm)	97*61*120	100*70*129	103*84*139	123*101*163	132*111*183	173*149*230
Weight (KG)	290	435	500	900	970	2000